

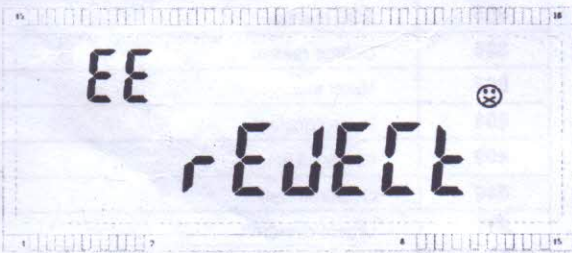
## How to charge meter?

- User buy electricity from vending department. User can get 20 bit charge token, such as "6418 - 8786 - 2991 - 6780 - 9510".
- User input 20 bit charge token through meter keypad.
- Charge successfully. Charge amount 300.00.

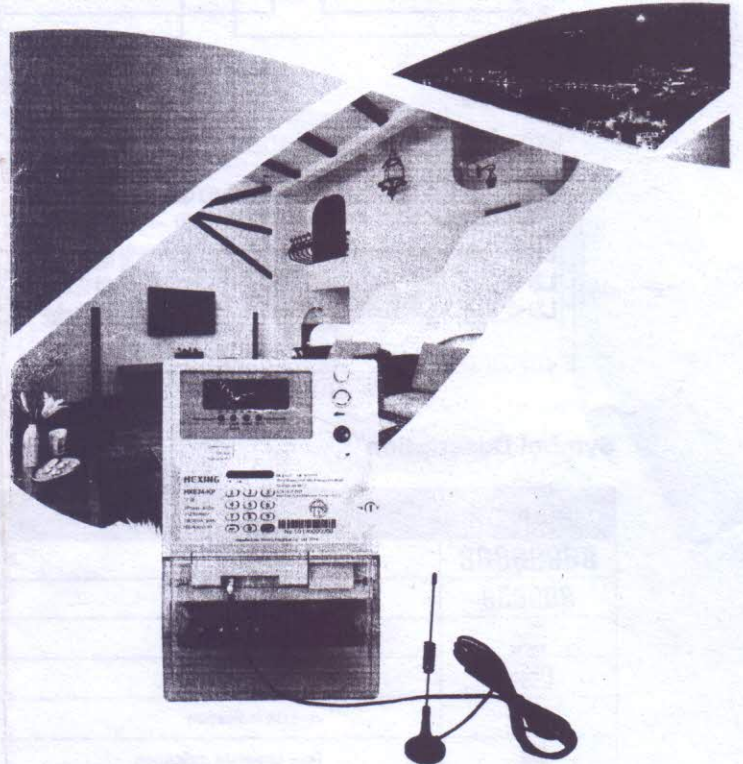
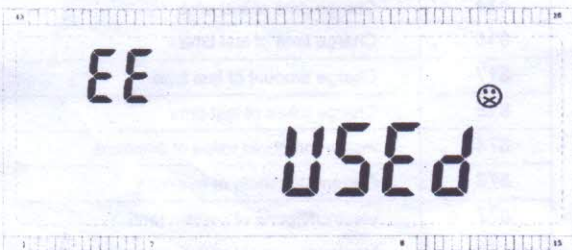


- Charge failed.

20 bit TOKEN is input wrong:



TOKEN is used:



## HXE34-KP Three Phase Keypad Perpayment Meter

*Protect Your Revenue*

[www.hxgroup.cn](http://www.hxgroup.cn)

**HEXING** [www.hxgroup.cn](http://www.hxgroup.cn)  
 Headquarter: 3418-5 Moganshan Road, Shangcheng Industrial Zone,  
 310011, Hangzhou City, China  
 Tel: +86 571 2802 07 67  
 Fax: +86 571 2802 92 63  
 Email: [market@hxgroup.co](mailto:market@hxgroup.co)

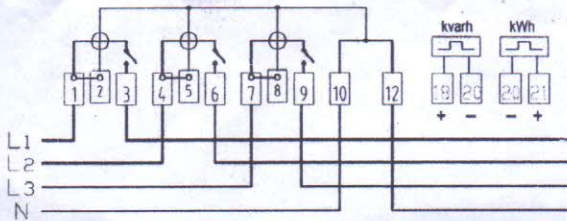
in g+ t f You Tube



Scan Here to Discover More

© Copyright 2014, Hexing Group. All Rights Reserved.  
 Reproduction or distribution without express written authority is strictly prohibited.

### Wiring diagram



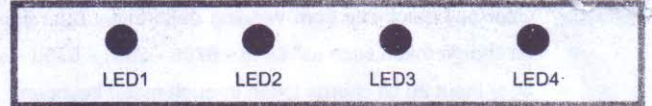
### LCD Display



### Symbol Description

LCD DISPLAY	DESCRIPTION
88888888	data display
888888	OBIS display
Day CREDIT kWh	Unit display
↔	in communication
←	reverse indication
●	Four quadrant indication
III	Low battery
—○—	Relay connect
—○	Relay disconnect
DATE	date
TIME	time
①②③④	tariff
☺	charge success
☹	charge failed
Y	GPRS signal
▼ (81-84)	status indication

### LED indication



LED1 : reactive pulse light

LED2 : green/red indication light, it indicate credit status

LED3 : red indication light, indicate relay fault status

LED4 : active pulse light

Code Number	Description
800	Total energy
801	Credit
802	Date
803	Time
804	Meter number
805	SGC number
806	Outage reason
807	Meter status
808	Pulse constant
809	Power off times
810	Overdraft limit
811	Urgent overdraft
812	Cancel alarm
814	Query consumption of current month
815	Charge date of last time
816	Charge time of last time
817	Charge amount of last time
818	Charge token of last time
874	Power threshold value of overload
876	Current threshold of overload
877	electricity price of current tariff
878	Maximum current active demand
879	Enter test mode
881	Voltage of phase A
882	Voltage of phase B
883	Voltage of phase C
888	Return token code
891	Current of phase A
892	Current of phase B
893	Current of phase C