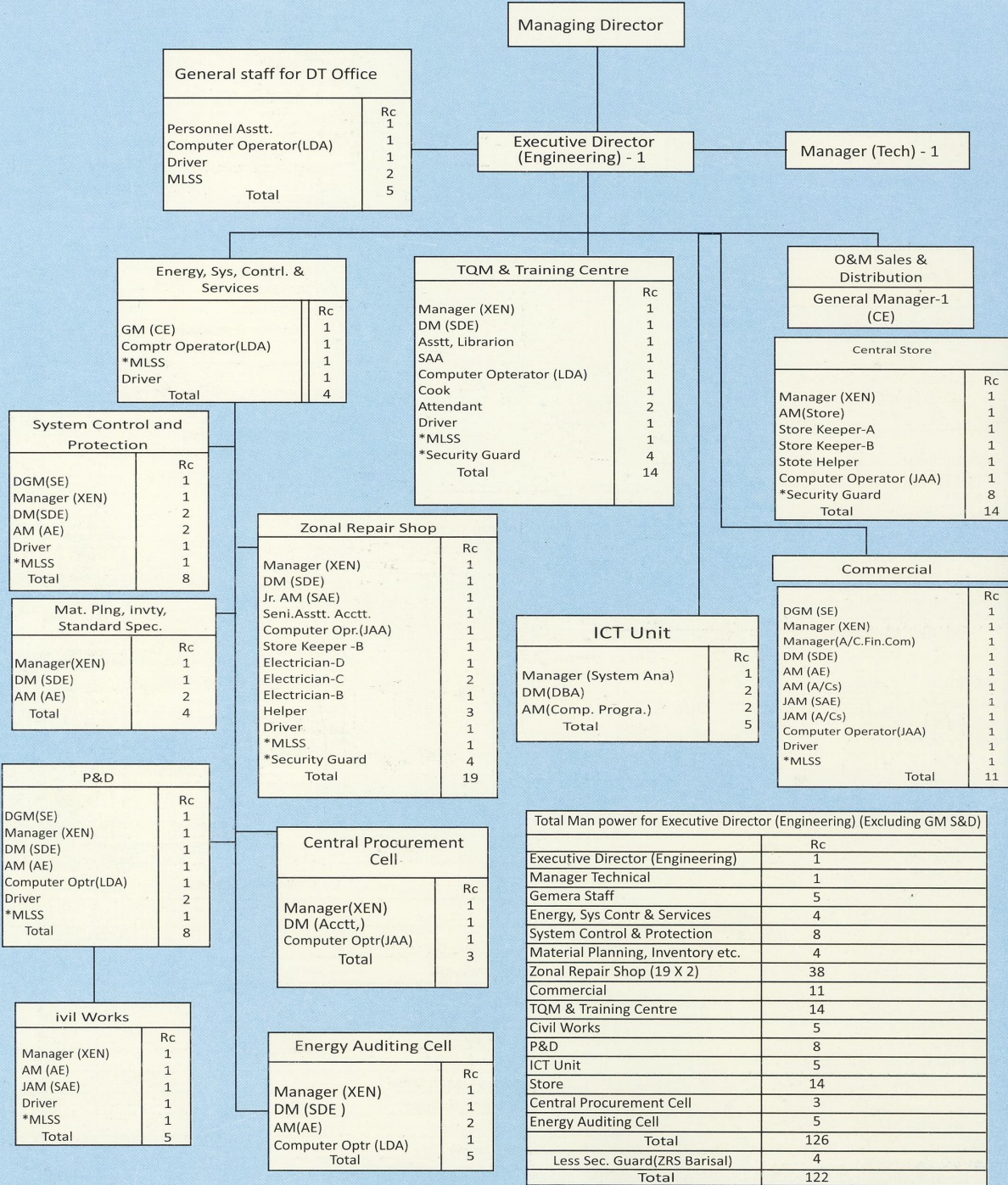


WEST ZONE POWER DISTRIBUTION COMPANY LIMITED (WZPDCL) ORGANIZATION CHART



Total Man power for Executive Director (Engineering) (Excluding GM S&D)	
	Rc
Executive Director (Engineering)	1
Manager Technical	1
Gemera Staff	5
Energy, Sys Contr & Services	4
System Control & Protection	8
Material Planning, Inventory etc.	4
Zonal Repair Shop (19 X 2)	38
Commercial	11
TQM & Training Centre	14
Civil Works	5
P&D	8
ICT Unit	5
Store	14
Central Procurement Cell	3
Energy Auditing Cell	5
Total	126
Less Sec. Guard(ZRS Barisal)	4
Total	122

